



# Week 1 & Week 2 Forecast for the Philippines using GEFS Model



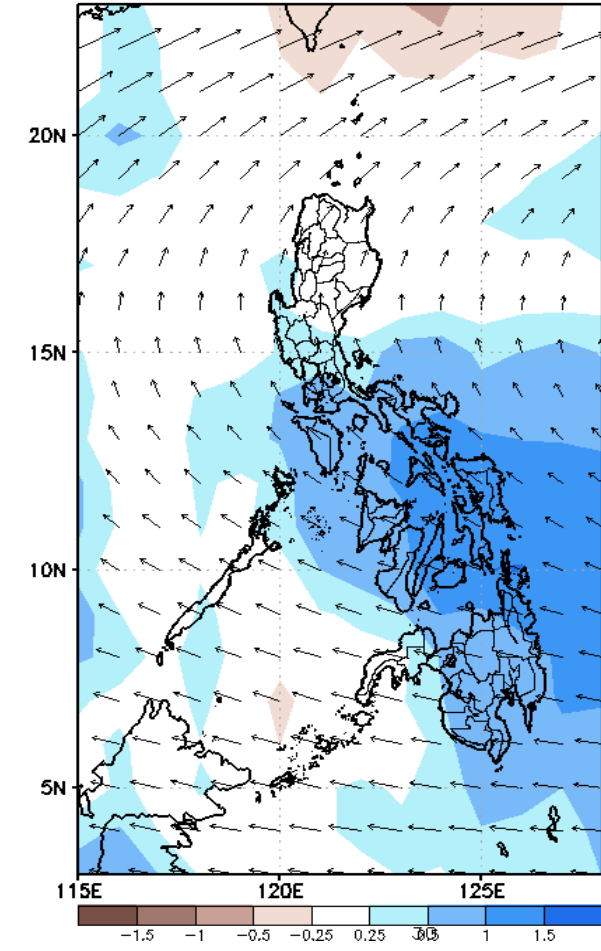
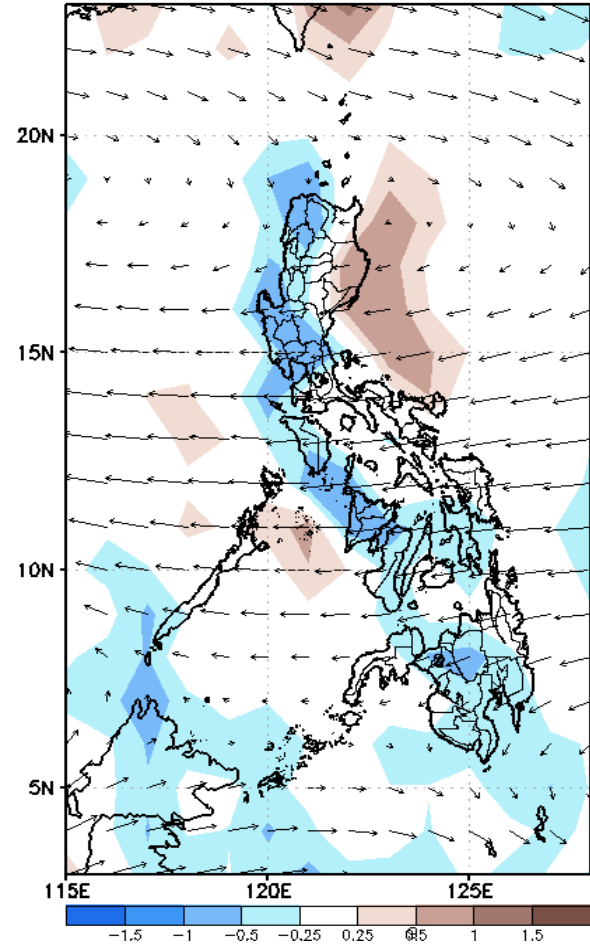
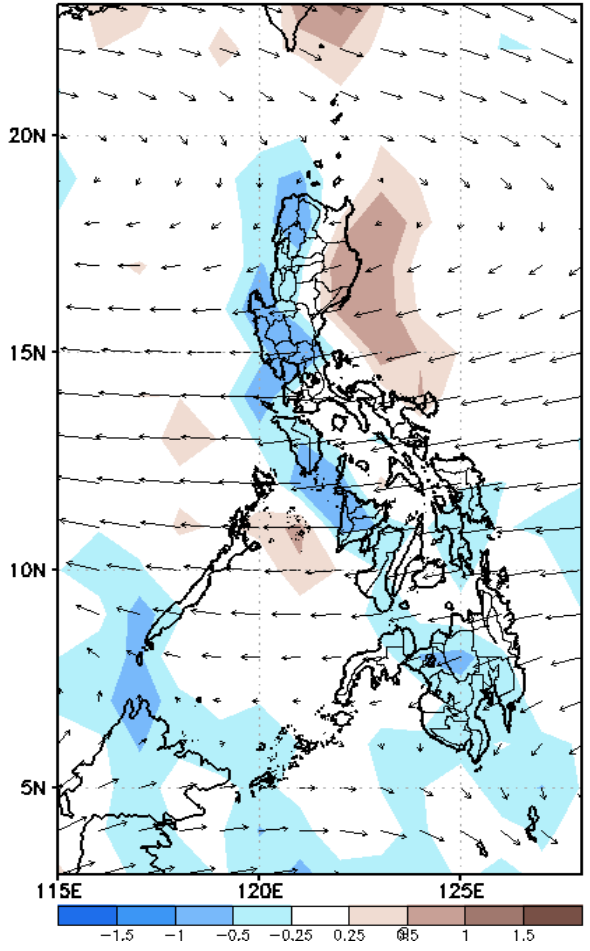
# GEFS Week-1 Forecasts: Wind Anomaly Forecast

Week 1: Jan 04-10, 2023

GEFS Week-1 850-hPa Divergence and Wind Anom  
Valid: 20230104 - 20230110

GEFS Week-1 700-hPa Divergence and Wind Anom  
Valid: 20230104 - 20230110

GEFS Week-1 200-hPa Divergence and Wind Anom  
Valid: 20230104 - 20230110



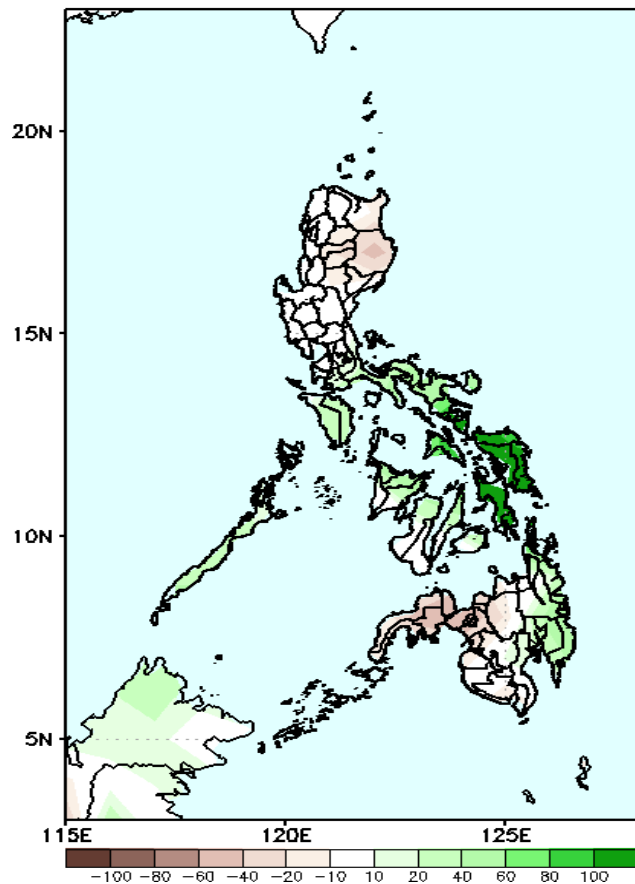
Northeast Monsoon affecting most parts of Luzon, Easterlies affecting Visayas and Mindanao



# Precipitation Anomaly and Exceedance Probability > 25/50 mm

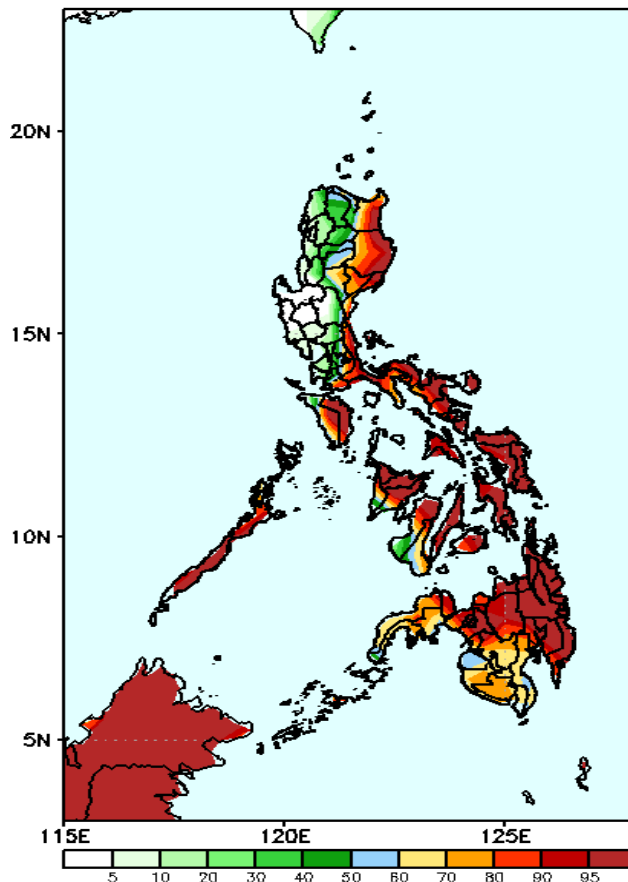
Week 1: Jan 04-10, 2023

GEFS Week-1 Precip Anomaly  
Valid: 20230104 - 20230110



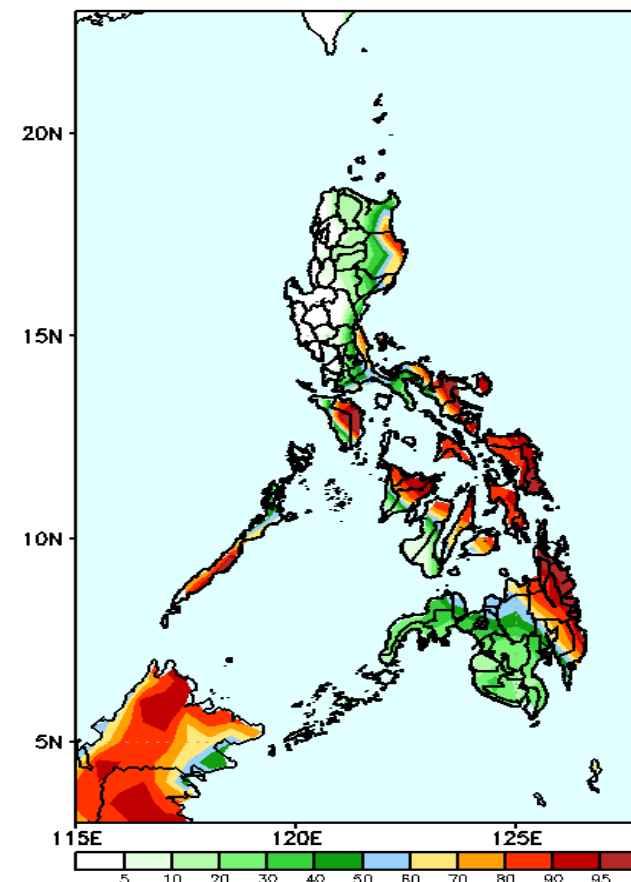
Increase of rainfall of more than 100mm is expected in Sorsogon, most parts of Eastern Visayas and Surigao del Norte and 40-90mm in Southern Luzon, Bicol Region, Central Visayas, Aklan, Capiz, Negros Occ. and eastern Mindanao while 20-80mm rainfall deficit in Isabela, Zamboanga Peninsula, Misamis Occ. and Lanao provinces during the forecast period.

GEFS Week-1 Exceedance Prob. > 25mm  
Valid: 20230104 - 20230110



High probability of rainfall to exceed 25mm in most parts of the country except Ilocos Region and Central Luzon (except Aurora) during the forecast period.

GEFS Week-1 Exceedance Prob. > 50mm  
Valid: 20230104 - 20230110



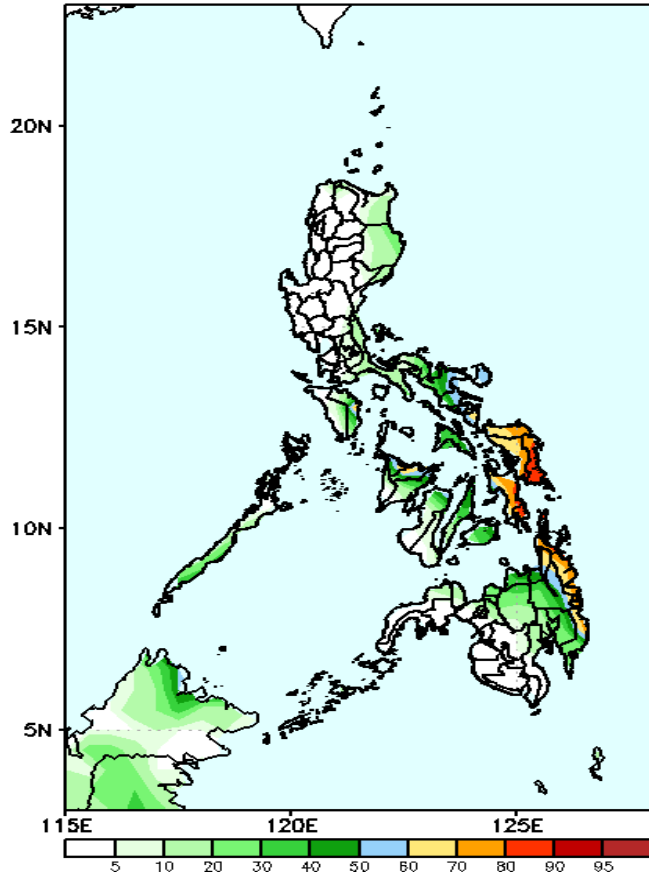
High probability of rainfall to exceed 50mm in eastern part of Cagayan, Isabela & Aurora, northern Quezon, Mindoro, southern Palawan, and most parts of Bicol Region, Visayas and eastern Mindanao while less likely for the rest of the country during the forecast period.



# Exceedance Probability > 100/150/200 mm

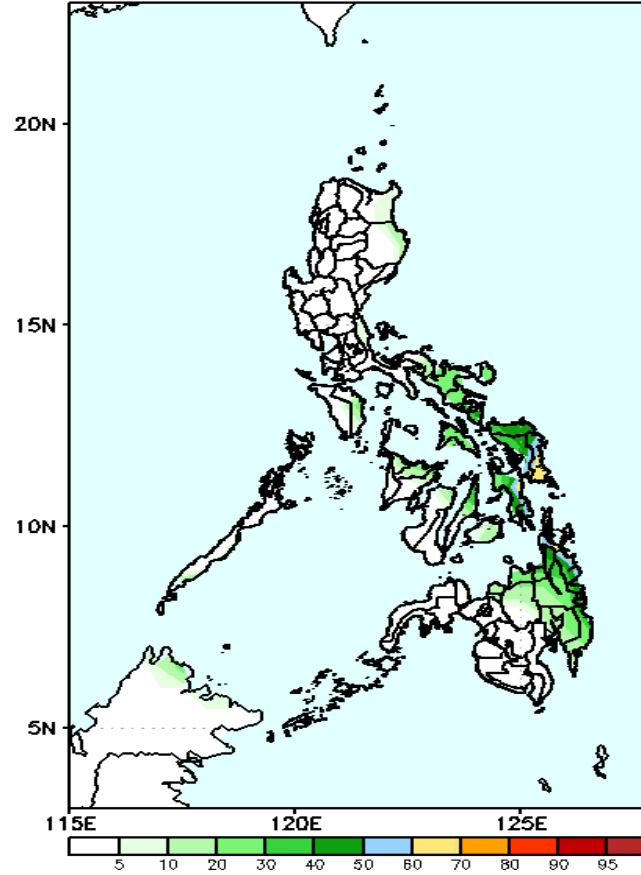
Week 1: Jan 04-10, 2023

GEFS Week-1 Exceedance Prob. > 100mm  
Valid: 20230104 - 20230110



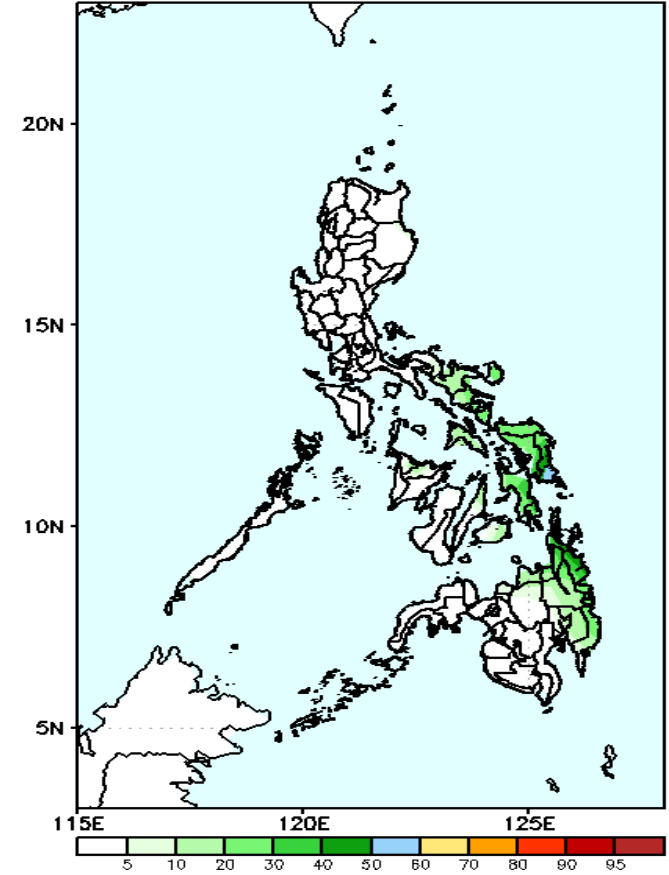
High probability of rainfall to exceed 100mm in Eastern Visayas and eastern part of CARAGA Region and Davao Oriental while less likely for the rest of the country during the forecast period.

GEFS Week-1 Exceedance Prob. > 150mm  
Valid: 20230104 - 20230110



Low probability of rainfall to exceed 150mm in most parts of the country during the forecast period.

GEFS Week-1 Exceedance Prob. > 200mm  
Valid: 20230104 - 20230110



Low probability of rainfall to exceed 200mm in most parts of the country during the forecast period.



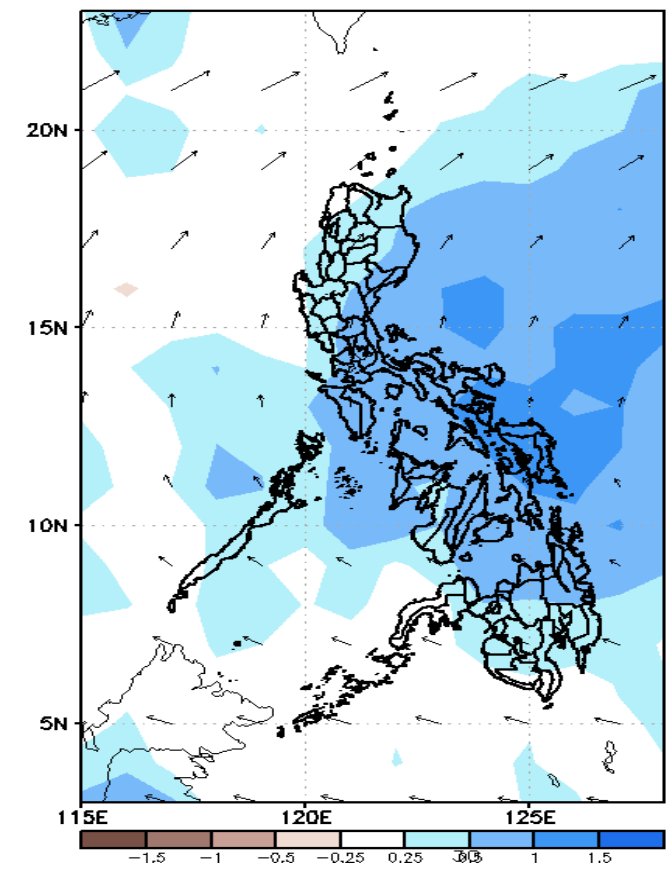
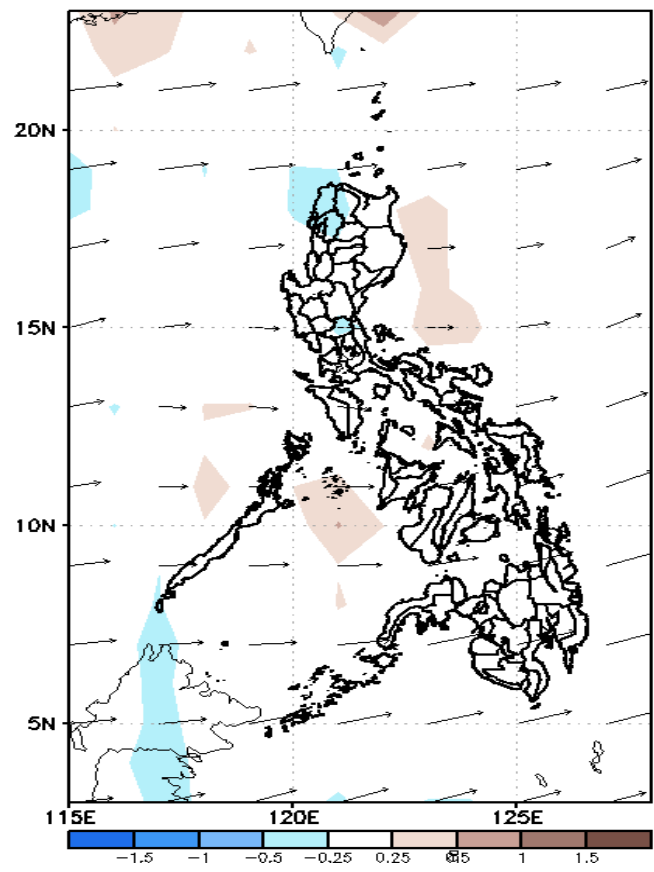
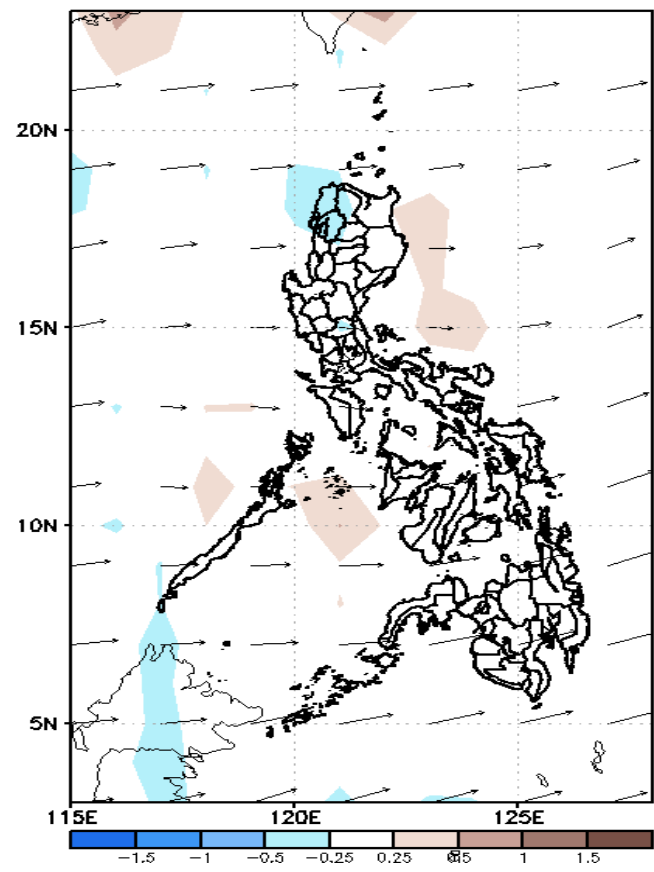
# GEFS Week-2 Forecasts: Wind Anomaly Forecast

Week 2: Jan 11-17, 2023

GEFS Week-2 850-hPa Divergence and Wind Anom  
Valid: 20230111 - 20230117

GEFS Week-2 700-hPa Divergence and Wind Anom  
Valid: 20230111 - 20230117

GEFS week-2 200-hPa Divergence and Wind Anom  
Valid: 20230111 - 20230117

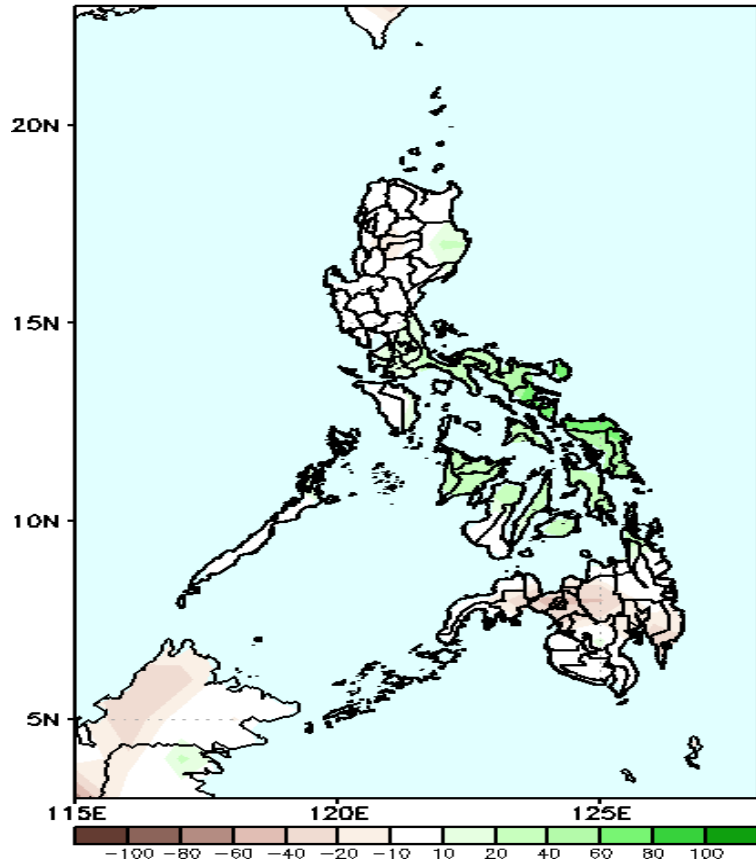


Northeast Monsoon is forecasted to affect most parts of Luzon, Easterlies affecting Visayas and Mindanao.

# Precipitation Anomaly and Exceedance Probability > 25/50 mm

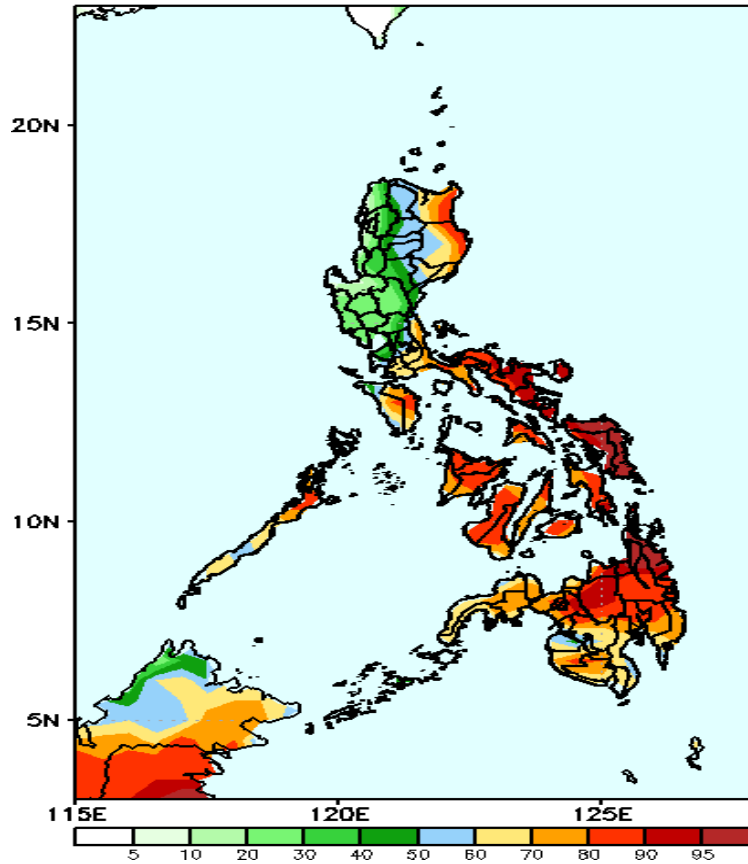
Week 2: Jan 11-17, 2023

GEFS Week-2 Precip Anomaly  
Valid: 20230111 - 20230117



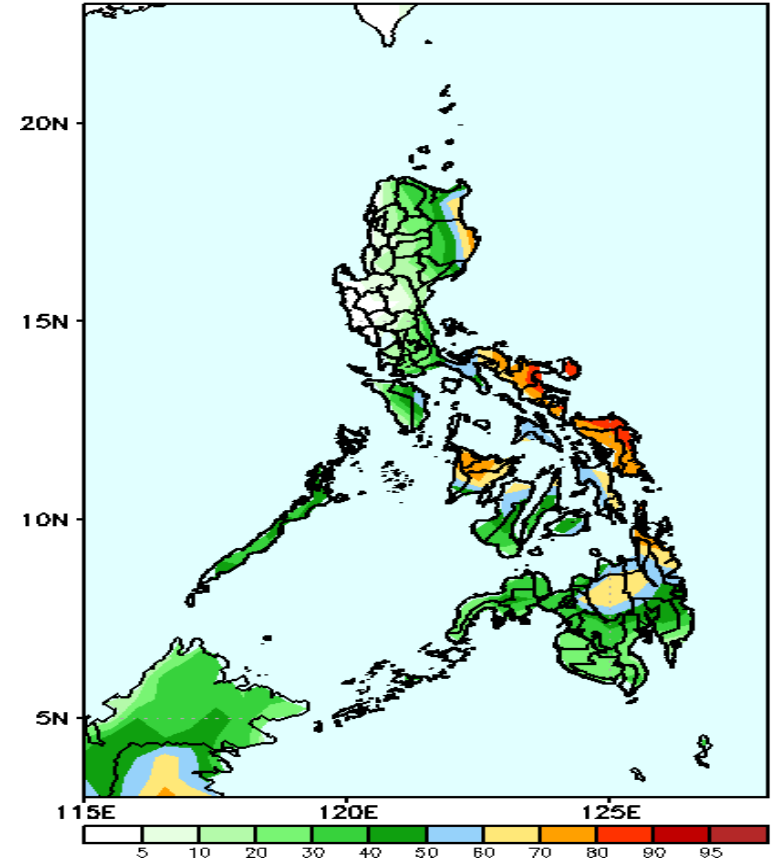
Increase of rainfall of 40-90mm is expected in most parts of Quezon, Bicol Region and Visayas while 20-40mm rainfall deficit in Bukidnon, Lanao provinces and Davao Oriental during the forecast period.

GEFS Week-2 Exceedance Prob. > 25mm  
Valid: 20230111 - 20230117



High probability of rainfall to exceed 25mm in most parts of eastern and Southern Luzon, Bicol Region, Visayas and Mindanao while less likely for the rest of the Luzon during the forecast period.

GEFS Week-2 Exceedance Prob. > 50mm  
Valid: 20230111 - 20230117

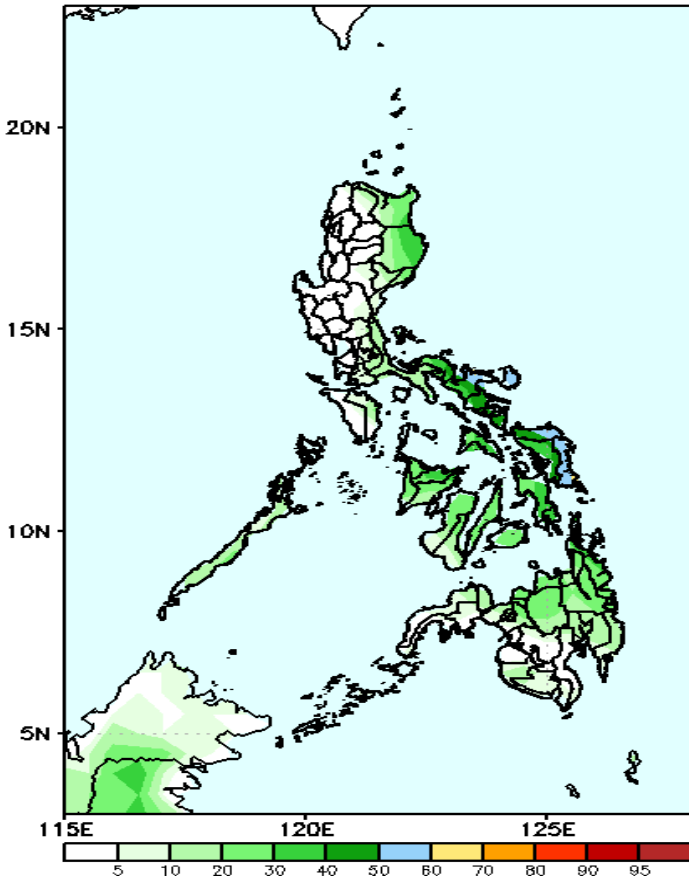


High probability of rainfall to exceed 50mm in most parts of Bicol Region, Samar provinces, Panay Island and Surigao del Norte, 60-80% chance in eastern parts of Cagayan & Isabela, Leyte province and northern Mindanao while less likely for the rest of the country during the forecast period.

# Exceedance Probability > 100/150/200 mm

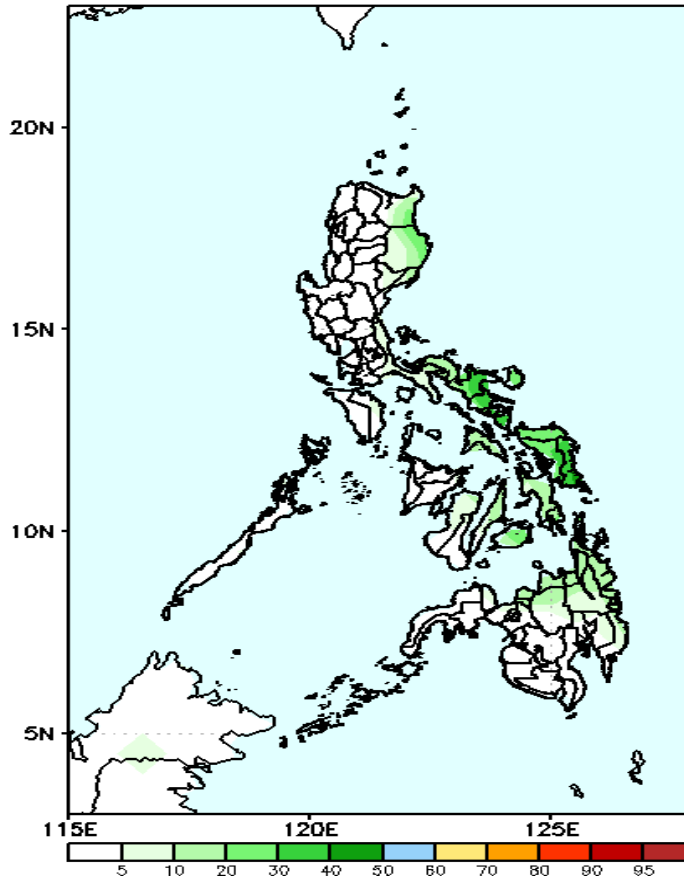
Week 2: Jan 10-16, 2023

GEFS Week-2 Exceedance Prob. > 100mm  
Valid: 20230111 - 20230117



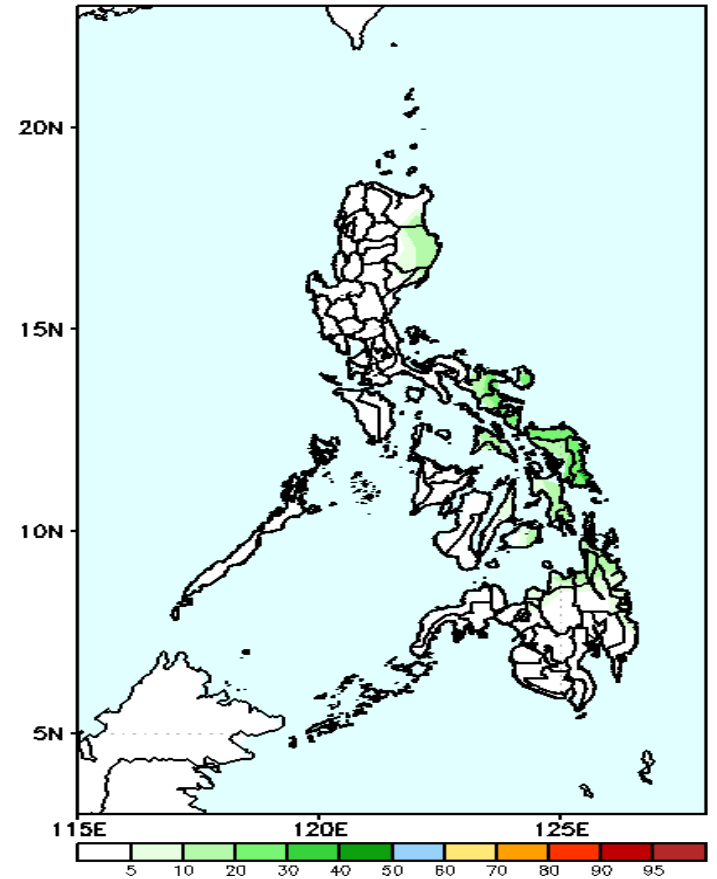
Low probability of rainfall to exceed 100mm in most parts of the country during the forecast period.

GEFS Week-2 Exceedance Prob. > 150mm  
Valid: 20230111 - 20230117



Low probability of rainfall to exceed 150mm in most parts of the country during the forecast period.

GEFS Week-2 Exceedance Prob. > 200mm  
Valid: 20230111 - 20230117



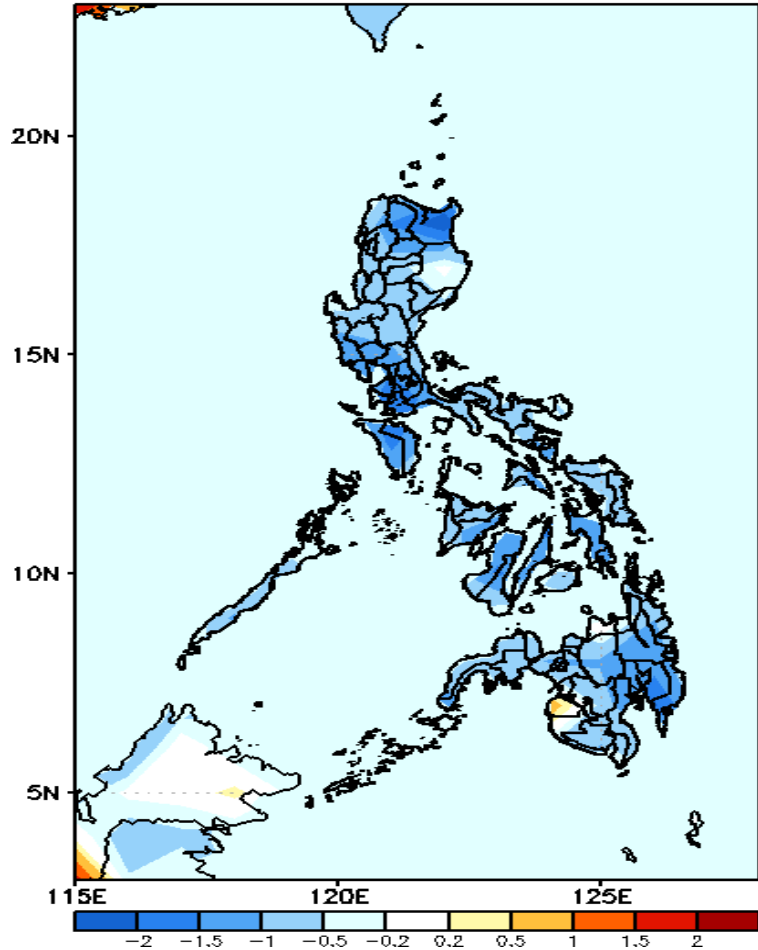
Low probability of rainfall to exceed 200mm in most parts of the country during the forecast period.

ig SA



# GEFS Week-1 & 2 Forecasts: T2m Anomaly

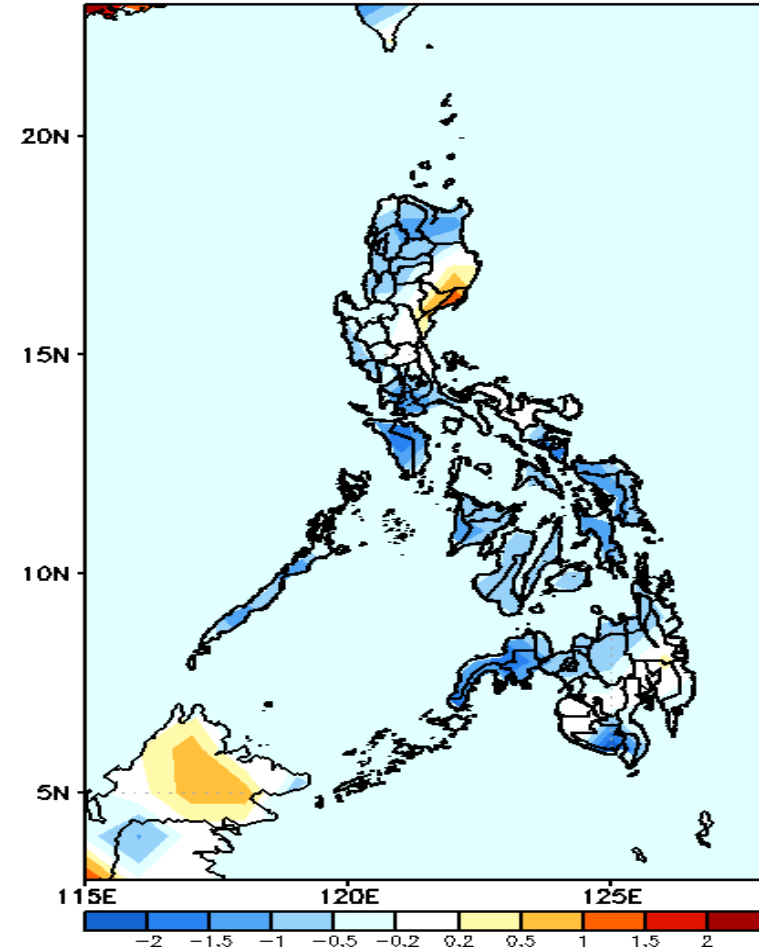
GEFS Week-1 T2m Anomaly  
Valid: 20230104 - 20230110



## 2m Temperature Week 1: Jan 04-10, 2023

Slightly cooler to cooler than average surface air temperature will likely experience in most parts of the country except in Maguindanao where slightly warmer temperature is expected during the forecast period.

GEFS Week-2 T2m Anomaly  
Valid: 20230111 - 20230117



## 2m Temperature Week 2: Jan 11-17, 2023

Average to cooler than average surface air temperature will likely experience in most parts of the country except in Quirino & Aurora where slightly warmer to warmer temperature is expected during the forecast period.

